

UJI VALIDITAS DAN RELIABILITY KUISIONER BAGIAN I (KEAHLIAN)

***** Method 2 (covariance matrix) will be used for this analysis *****

r table dengan tingkat signifikansi 5% dan df = 91 adalah sebesar **0,207**

R E L I A B I L I T Y A N A L Y S I S - S C A L E (A L P H A)

		Mean	Std Dev	Cases
1.	P.01	3.7097	.5630	93.0
2.	P.02	3.9355	.5862	93.0
3.	P.03	4.0430	.5882	93.0
4.	P.04	4.0000	.6255	93.0
5.	P.05	3.6667	.6968	93.0
6.	P.06	3.7312	.7244	93.0
7.	P.07	3.8817	.6732	93.0
8.	P.08	3.7204	.7990	93.0
9.	P.09	3.8387	.5951	93.0
10.	P.10	3.9140	.5449	93.0
11.	P.11	3.7957	.7454	93.0
12.	P.12	3.7097	.7006	93.0
13.	P.13	3.8710	.5753	93.0
14.	P.14	3.8387	.6961	93.0
15.	P.15	3.7312	.7093	93.0
16.	P.16	3.7527	.7893	93.0
17.	P.17	3.5484	.8277	93.0
18.	P.18	3.8280	.6190	93.0
19.	P.19	3.8710	.6631	93.0
20.	P.20	3.8495	.6748	93.0
21.	P.21	3.7634	.7431	93.0
22.	P.22	4.0108	.6510	93.0
23.	P.23	3.6237	.6902	93.0
24.	P.24	3.8817	.7048	93.0
25.	P.25	3.6989	.7910	93.0

R E L I A B I L I T Y A N A L Y S I S - S C A L E (A L P H A)

N of Cases = 93.0

Statistics for Scale	Mean	Variance	Std Dev	N of Variables	
	95.2151	55.6272	7.4584	25	
Item Means	Mean	Minimum	Maximum	Range	Max/Min
Variance	3.8086	3.5484	4.0430	.4946	1.1394
	.0150				
Item Variances	Mean	Minimum	Maximum	Range	Max/Min
Variance	.4671	.2969	.6851	.3883	2.3079
	.0115				

Item-total Statistics

Alpha Item Deleted	Scale Mean if Item Deleted	Scale Variance if Item Deleted	Corrected Item- Total Correlation	Squared Multiple Correlation	if
P.01 .8211	91.5054	53.2962	.2450	.	
P.02 .8162	91.2796	52.0297	.3848	.	
P.03 .8213	91.1720	53.2092	.2415	.	
P.04 .8147	91.2151	51.4750	.4190	.	
P.05 .8189	91.5484	52.0112	.3115	.	
P.06 .8195	91.4839	51.9481	.3021	.	
P.07 .8198	91.3333	52.3551	.2893	.	
P.08 .8176	91.4946	50.9918	.3503	.	
P.09 .8137	91.3763	51.4112	.4525	.	
P.10 .8196	91.3011	53.0388	.2887	.	
P.11 .8221	91.4194	52.4201	.2456	.	
P.12 .8125	91.5054	50.5353	.4619	.	
P.13 .8153	91.3441	51.8803	.4122	.	
P.14 .8105	91.3763	50.1286	.5087	.	
P.15 .8139	91.4839	50.7959	.4281	.	
P.16 .8175	91.4624	51.0339	.3521	.	
P.17 .8129	91.6667	49.7464	.4450	.	
P.18 .8143	91.3871	51.4137	.4315	.	
P.19 .8206	91.3441	52.6194	.2669	.	
P.20 .8164	91.3656	51.5605	.3726	.	
P.21 .8202	91.4516	51.9895	.2880	.	
P.22 .8094	91.2043	50.1643	.5464	.	
P.23 .8158	91.5914	51.3312	.3862	.	
P.24 .8172	91.3333	51.5507	.3537	.	
P.25 .8224	91.5161	52.1655	.2482	.	

UJI VALIDITAS DAN RELIABILITY KUISIONER BAGIAN II (SUMBER DAYA)

***** Method 2 (covariance matrix) will be used for this analysis *****

RELIABILITY ANALYSIS - SCALE (ALPHA)

		Mean	Std Dev	Cases
1.	P.26	3.0000	1.1034	93.0
2.	P.27	3.2581	1.0311	93.0
3.	P.28	3.8602	1.0278	93.0
4.	P.29	3.6667	1.0036	93.0
5.	P.30	3.4624	.9156	93.0
6.	P.31	3.2258	1.0122	93.0
7.	P.32	3.3226	1.1993	93.0
8.	P.33	3.6022	1.1242	93.0
9.	P.34	3.5269	1.1382	93.0
10.	P.35	3.9462	.9931	93.0
11.	P.36	3.1505	.9994	93.0
12.	P.37	3.3548	.9852	93.0
13.	P.38	3.2688	1.0948	93.0

N of Cases = 93.0

Statistics for Scale	Mean	Variance	Std Dev	N of Variables
	44.6452	62.8401	7.9272	13

Item Means Variance	Mean	Minimum	Maximum	Range	Max/Min
	3.4342	3.0000	3.9462	.9462	1.3154
	.0771				

Item Variances Variance	Mean	Minimum	Maximum	Range	Max/Min
	1.1045	.8382	1.4383	.6000	1.7158
	.0274				

Item-total Statistics

Item Deleted	Scale Mean if Item Deleted	Scale Variance if Item Deleted	Corrected Item-Total Correlation	Squared Multiple Correlation	Alpha if Deleted
P.26 .8075	41.6452	50.5792	.7037	.9597	
P.27 .8188	41.3871	53.3050	.5627	.8177	
P.28 .8257	40.7849	54.7141	.4650	.8928	
P.29 .8287	40.9785	55.5430	.4205	.8983	
P.30 .8387	41.1828	58.4771	.2517	.7783	
P.31 .8313	41.4194	56.0288	.3819	.8127	

UJI VALIDITAS DAN RELIABILITY KUISIONER BAGIAN III (IKLIM ORGANISASI)

***** Method 2 (covariance matrix) will be used for this analysis *****

R E L I A B I L I T Y A N A L Y S I S - S C A L E (A L P H A)

		Mean	Std Dev	Cases
1.	P.39	3.2796	.6654	93.0
2.	P.40	4.3978	.8228	93.0
3.	P.41	3.9032	.7382	93.0
4.	P.42	3.9785	.9323	93.0
5.	P.43	4.2581	.7358	93.0
6.	P.44	3.6774	.6783	93.0
7.	P.45	3.8602	.8672	93.0
8.	P.46	3.5914	.5563	93.0
9.	P.47	3.9785	.9438	93.0
10.	P.48	3.9570	.9079	93.0
11.	P.49	3.7742	.5542	93.0
12.	P.50	3.5699	.5192	93.0
13.	P.51	3.5591	.8529	93.0
14.	P.52	3.7634	.7718	93.0
15.	P.53	3.6129	.6432	93.0
16.	P.54	3.3763	1.0312	93.0
17.	P.55	4.0645	.9647	93.0
18.	P.56	3.8710	.8499	93.0
19.	P.57	3.5591	.5607	93.0
20.	P.58	3.2796	.9013	93.0

N of Cases = 93.0

Statistics for Scale	Mean	Variance	Std Dev	N of Variables	
	75.3118	170.0647	13.0409	20	
Item Means	Mean	Minimum	Maximum	Range	Max/Min
Variance	3.7656	3.2796	4.3978	1.1183	1.3410
	.0898				
Item Variances	Mean	Minimum	Maximum	Range	Max/Min
Variance	.6234	.2695	1.0633	.7938	3.9454
	.0564				

R E L I A B I L I T Y A N A L Y S I S - S C A L E (A L P H A)

Item-total Statistics

Item Deleted	Scale Mean if Item Deleted	Scale Variance if Item Deleted	Corrected Item-Total Correlation	Squared Multiple Correlation	Alpha if Deleted
P.39	72.0323	163.4663	.3618	.	
	.9779				

P.40	70.9140	155.4490	.6794	.
.9755				
P.41	71.4086	156.4182	.7096	.
.9751				
P.42	71.3333	148.4638	.9126	.
.9731				
P.43	71.0538	154.7471	.8072	.
.9742				
P.44	71.6344	155.0823	.8597	.
.9738				
P.45	71.4516	149.8590	.9163	.
.9730				
P.46	71.7204	157.8340	.8528	.
.9742				
P.47	71.3333	152.0725	.7346	.
.9752				
P.48	71.3548	148.6227	.9314	.
.9729				
P.49	71.5376	160.5991	.6520	.
.9756				
P.50	71.7419	157.7370	.9247	.
.9739				
P.51	71.7527	152.1882	.8149	.
.9741				
P.52	71.5484	152.4243	.8945	.
.9733				
P.53	71.6989	155.8649	.8584	.
.9739				
P.54	71.9355	147.2784	.8679	.
.9738				
P.55	71.2473	146.6012	.9646	.
.9725				
P.56	71.4409	152.2927	.8128	.
.9741				
P.57	71.7527	157.4273	.8758	.
.9741				
P.58	72.0323	149.2055	.9105	.
.9731				

Reliability Coefficients 20 items

Alpha = .9755 Standardized item alpha = .9771

UJI VALIDITAS DAN RELIABILITY KUISIONER BAGIAN IV (STRUKTUR ORGANISASI)

***** Method 2 (covariance matrix) will be used for this analysis *****

R E L I A B I L I T Y A N A L Y S I S - S C A L E (A L P H A)

		Mean	Std Dev	Cases
1.	P.59	3.6237	.7928	93.0
2.	P.60	4.2258	.8614	93.0
3.	P.61	4.0215	.6912	93.0
4.	P.62	4.3656	.8696	93.0
5.	P.63	4.4409	.7142	93.0
6.	P.64	3.8065	.6636	93.0
7.	P.65	4.2043	.8541	93.0
8.	P.66	3.7742	.5342	93.0
9.	P.67	4.3871	.8727	93.0
10.	P.68	4.3226	.8743	93.0
11.	P.69	4.0430	.6580	93.0
12.	P.70	3.7742	.5735	93.0
13.	P.71	3.8495	.8202	93.0
14.	P.72	3.9032	.7081	93.0
15.	P.73	3.7742	.5921	93.0
16.	P.74	3.7097	.9508	93.0
17.	P.75	4.3871	.8727	93.0
18.	P.76	3.9462	.6973	93.0
19.	P.77	3.8172	.5888	93.0
20.	P.78	3.7097	.9158	93.0

N of Cases = 93.0

Statistics for Scale	Mean	Variance	Std Dev	N of Variables	
	80.0860	153.1882	12.3769	20	
Item Means	Mean	Minimum	Maximum	Range	Max/Min
Variance	4.0043	3.6237	4.4409	.8172	1.2255
	.0734				
Item Variances	Mean	Minimum	Maximum	Range	Max/Min
Variance	.5860	.2854	.9039	.6185	3.1671
	.0363				

R E L I A B I L I T Y A N A L Y S I S - S C A L E (A L P H A)

Item-total Statistics

	Scale Mean	Scale Variance	Corrected Item-Total	Squared Multiple Correlation	if Item Deleted
Alpha					
Item Deleted			Correlation	Correlation	

P.59	76.4624	143.6861	.4669	.
.9741				
P.60	75.8602	142.2737	.4951	.
.9741				
P.61	76.0645	140.6262	.7371	.
.9712				
P.62	75.7204	133.4862	.9429	.
.9689				
P.63	75.6452	139.4705	.7830	.
.9707				
P.64	76.2796	140.6819	.7665	.
.9709				
P.65	75.8817	134.4098	.9113	.
.9692				
P.66	76.3118	142.5865	.8086	.
.9709				
P.67	75.6989	134.4084	.8905	.
.9695				
P.68	75.7634	133.7913	.9212	.
.9691				
P.69	76.0430	142.6503	.6429	.
.9720				
P.70	76.3118	141.2821	.8492	.
.9705				
P.71	76.2366	137.4869	.7813	.
.9707				
P.72	76.1828	139.5423	.7857	.
.9707				
P.73	76.3118	141.7604	.7856	.
.9709				
P.74	76.3763	132.6068	.8986	.
.9695				
P.75	75.6989	133.0605	.9619	.
.9686				
P.76	76.1398	139.9694	.7717	.
.9708				
P.77	76.2688	140.8943	.8547	.
.9704				
P.78	76.3763	134.4329	.8437	.
.9701				

Reliability Coefficients 20 items

Alpha = .9721 Standardized item alpha = .9735

***** Method 2 (covariance matrix) will be used for this analysis *****

R E L I A B I L I T Y A N A L Y S I S - S C A L E (A L P H A)

		Mean	Std Dev	Cases
1.	P.79	3.6237	.5694	93.0
2.	P.80	3.6022	.8228	93.0
3.	P.81	3.6344	.8181	93.0
4.	P.82	3.8172	.5506	93.0
5.	P.83	3.9355	.6725	93.0
6.	P.84	3.7419	.6900	93.0
7.	P.85	3.9570	.7210	93.0
8.	P.86	3.7204	.4512	93.0
9.	P.87	3.7204	.5390	93.0
10.	P.88	3.9570	.9881	93.0
11.	P.89	3.6667	.7122	93.0
12.	P.90	3.9247	.7259	93.0
13.	P.91	3.8495	.7364	93.0
14.	P.92	3.8172	.5096	93.0
15.	P.93	4.0323	.6503	93.0
16.	P.94	3.4731	.7884	93.0
17.	P.95	3.6989	.8047	93.0
18.	P.96	4.1183	.7640	93.0
19.	P.97	4.2688	.8228	93.0
20.	P.98	4.4086	.7835	93.0
21.	P.99	3.8387	.5375	93.0
22.	P.100	3.8925	.5607	93.0
23.	P.101	3.9570	.6743	93.0
24.	P.102	4.3118	.6753	93.0
25.	P.103	4.0860	.7321	93.0
26.	P.104	3.8387	.6306	93.0
27.	P.105	4.3011	.6558	93.0
28.	P.106	4.1075	.9024	93.0
29.	P.107	4.0108	.6836	93.0
30.	P.108	3.5806	.5957	93.0
31.	P.109	3.7312	.5923	93.0
32.	P.110	4.2043	.8151	93.0
33.	P.111	4.2151	.6229	93.0
34.	P.112	4.0430	.7506	93.0
35.	P.113	3.6022	.6280	93.0
36.	P.114	3.9462	.6973	93.0
37.	P.115	4.0538	.4971	93.0
38.	P.116	4.0430	.9315	93.0
39.	P.117	4.1935	.6470	93.0
40.	P.118	3.9355	.5479	93.0
41.	P.119	4.1505	.7510	93.0
42.	P.120	3.8925	.6670	93.0
43.	P.121	3.6559	.5613	93.0
44.	P.122	3.5161	.5826	93.0

N of Cases = 93.0

Statistics for	Mean	Variance	Std Dev	N of
Scale	172.0753	208.2225	14.4299	Variables 44

Item Means	Mean	Minimum	Maximum	Range	Max/Min
Variance	3.9108	3.4731	4.4086	.9355	1.2693
	.0546				

Item Variances	Mean	Minimum	Maximum	Range	Max/Min
Variance	.4808	.2036	.9764	.7728	4.7956
	.0288				

R E L I A B I L I T Y A N A L Y S I S - S C A L E (A L P H A)

Item-total Statistics

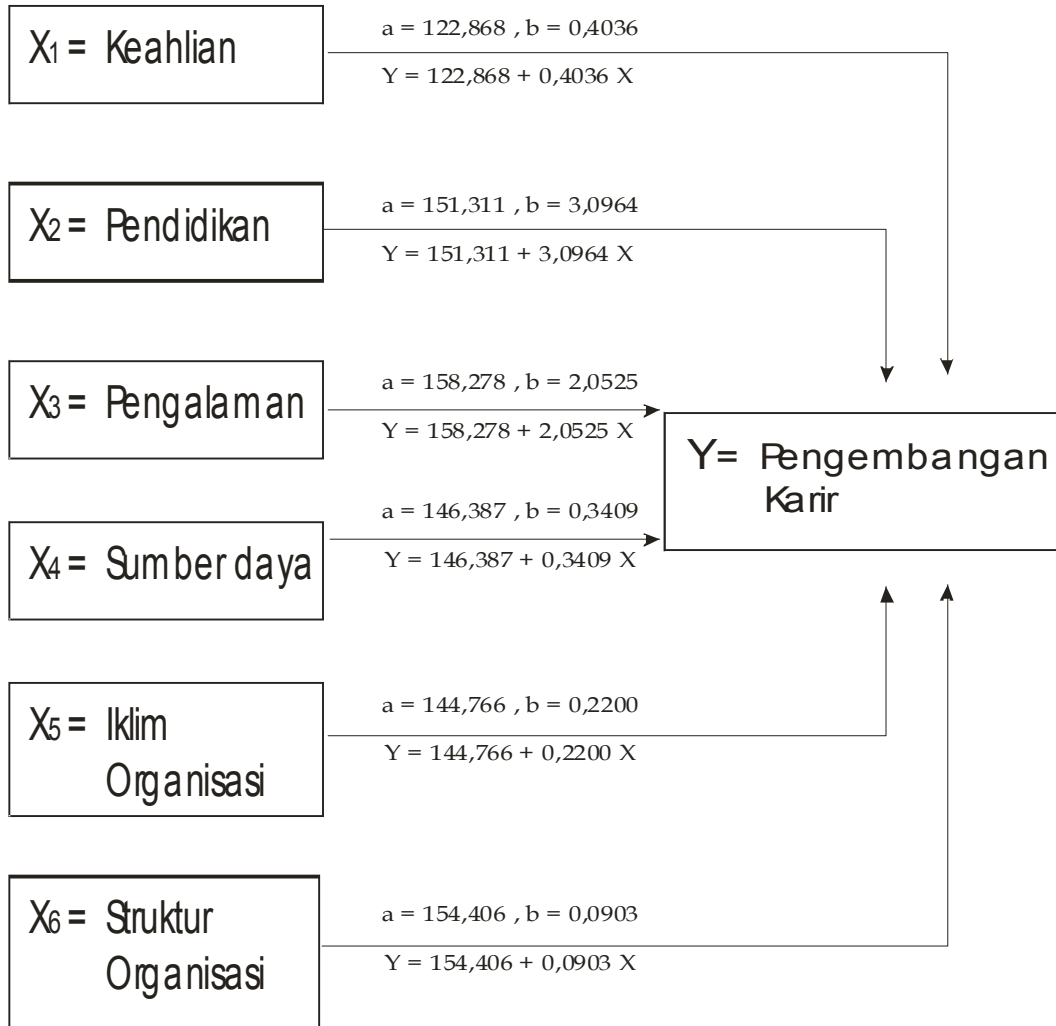
Alpha	Scale Mean	Scale Variance	Corrected Item-Total	Squared Multiple	if Deleted
P.79	168.4516	201.6634	.3855	.	
.9181					
P.80	168.4731	197.3607	.4406	.	
.9176					
P.81	168.4409	199.4231	.3519	.	
.9186					
P.82	168.2581	202.5414	.3431	.	
.9184					
P.83	168.1398	200.0346	.4066	.	
.9179					
P.84	168.3333	196.6594	.5729	.	
.9162					
P.85	168.1183	201.9315	.2816	.	
.9192					
P.86	168.3548	203.3619	.3619	.	
.9183					
P.87	168.3548	202.4488	.3575	.	
.9183					
P.88	168.1183	188.5402	.6893	.	
.9142					
P.89	168.4086	196.8530	.5435	.	
.9164					
P.90	168.1505	198.1293	.4682	.	
.9172					
P.91	168.2258	198.7637	.4294	.	
.9176					
P.92	168.2581	203.0631	.3374	.	
.9185					
P.93	168.0430	200.3025	.4073	.	
.9178					
P.94	168.6022	198.8943	.3915	.	
.9181					
P.95	168.3763	197.5633	.4426	.	
.9175					
P.96	167.9570	196.0633	.5410	.	
.9164					
P.97	167.8065	197.5056	.4341	.	
.9177					

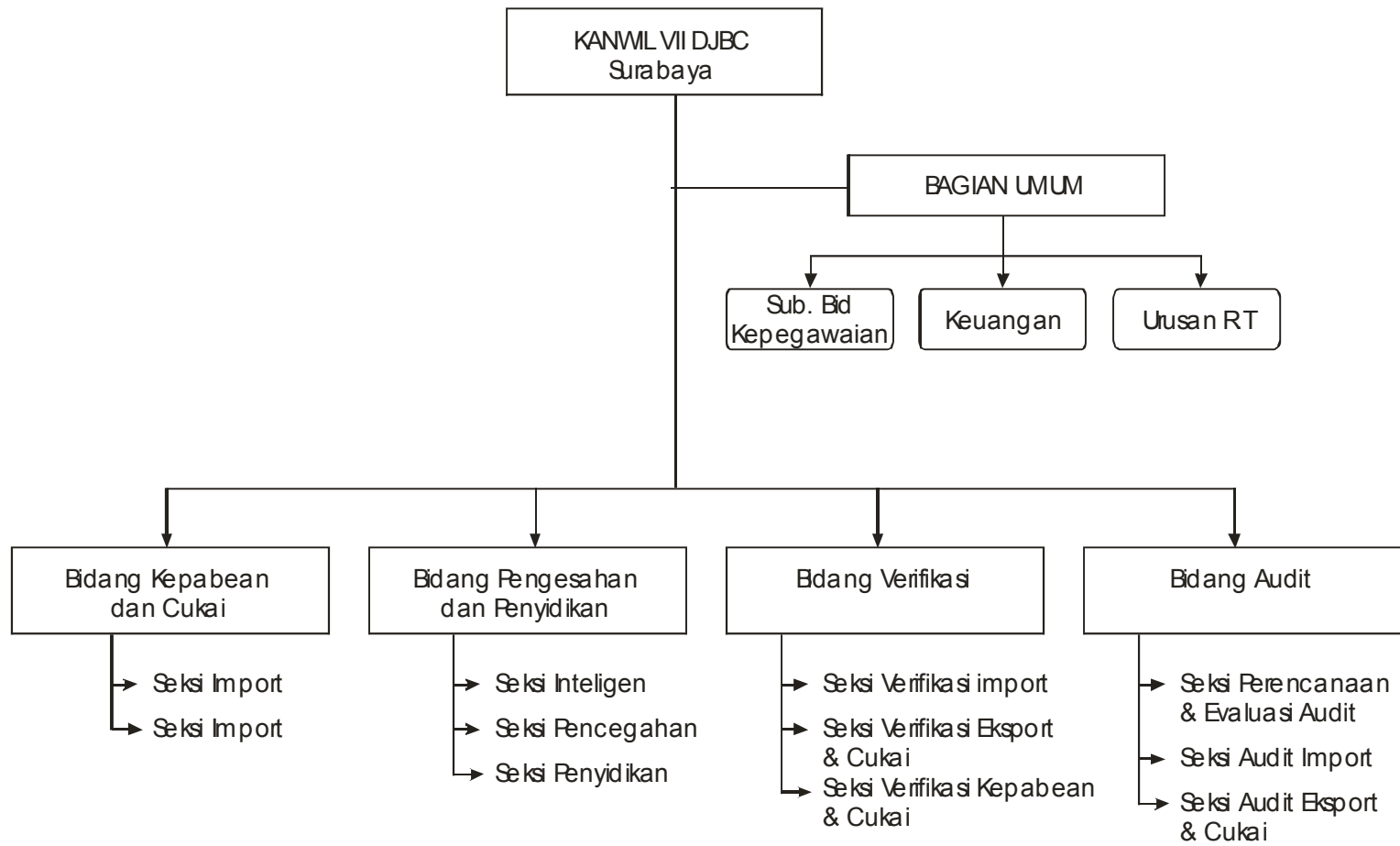
P.98	167.6667	195.8333	.5370	.
.9164				
P.99	168.2366	199.9434	.5256	.
.9170				
P.100	168.1828	198.6075	.5885	.
.9164				
P.101	168.1183	201.3663	.3345	.
.9186				
P.102	167.7634	198.4652	.4888	.
.9170				
P.103	167.9892	202.5325	.2473	.
.9196				
P.104	168.2366	199.0086	.4955	.
.9170				
P.105	167.7742	198.8072	.4858	.
.9171				
P.106	167.9677	193.5750	.5509	.
.9162				
P.107	168.0645	199.9958	.4013	.
.9179				
P.108	168.4946	199.4266	.5017	.
.9170				
P.109	168.3441	200.9890	.4098	.
.9178				
P.110	167.8710	194.9614	.5534	.
.9162				
P.111	167.8602	204.4259	.2914	.
.9198				
P.112	168.0323	201.1185	.3072	.
.9190				
P.113	168.4731	198.7085	.5151	.
.9169				
P.114	168.1290	199.7658	.4044	.
.9179				
P.115	168.0215	199.3039	.6179	.
.9164				
P.116	168.0323	199.4011	.3023	.
.9197				
P.117	167.8817	200.6272	.3915	.
.9180				
P.118	168.1398	199.2302	.5620	.
.9166				
P.119	167.9247	196.9617	.5074	.
.9168				
P.120	168.1828	201.0858	.3538	.
.9184				
P.121	168.4194	201.8548	.3795	.
.9181				
P.122	168.5591	199.4014	.5155	.
.9169				

Reliability Coefficients 44 items

Alpha = .9193 Standardized item alpha = .9213

Persamaan Linier





Struktur Organisasi